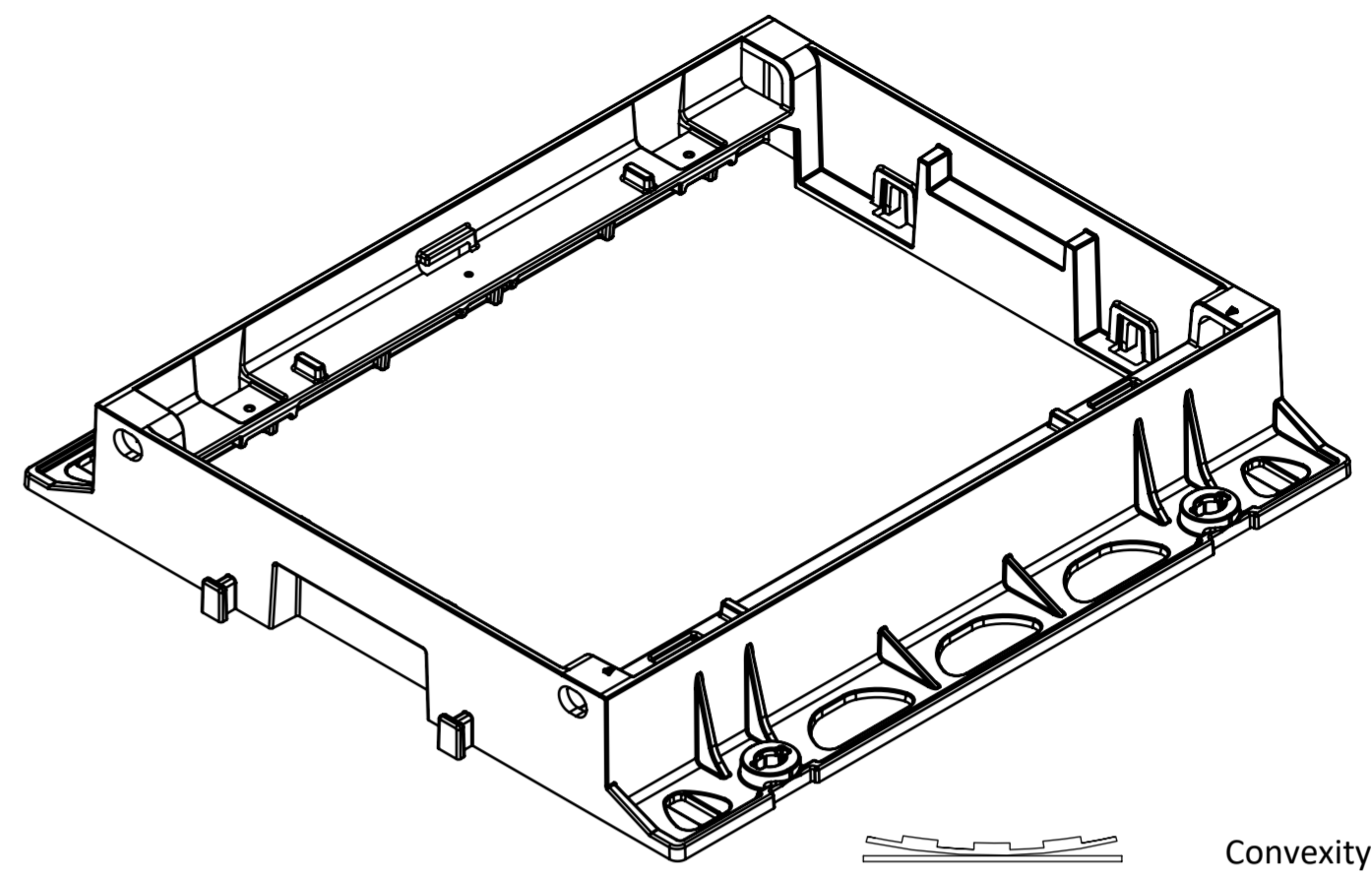
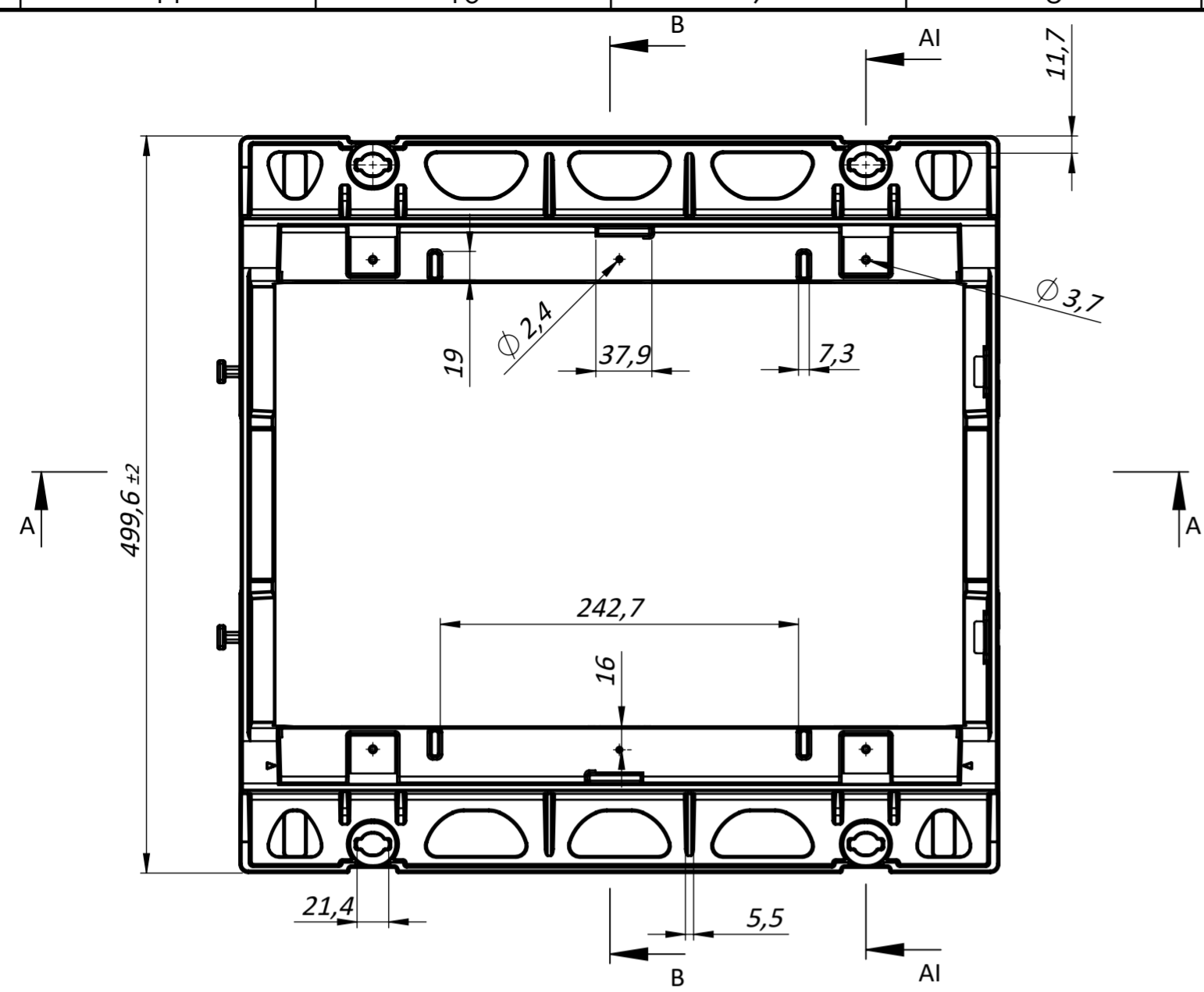


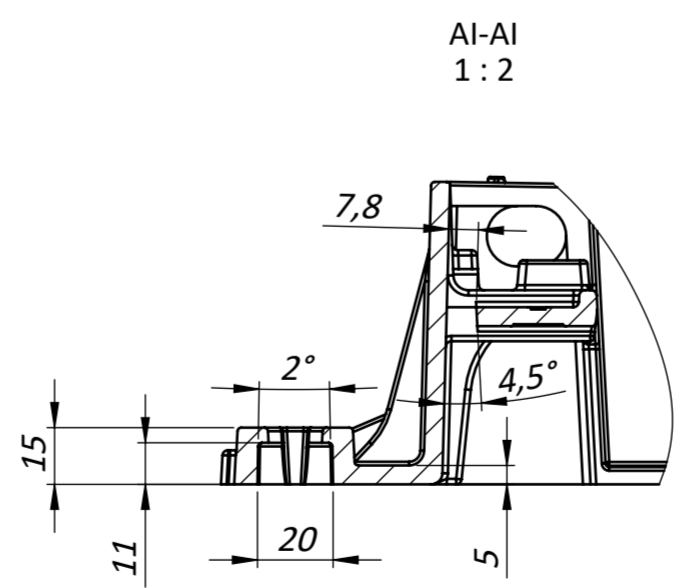
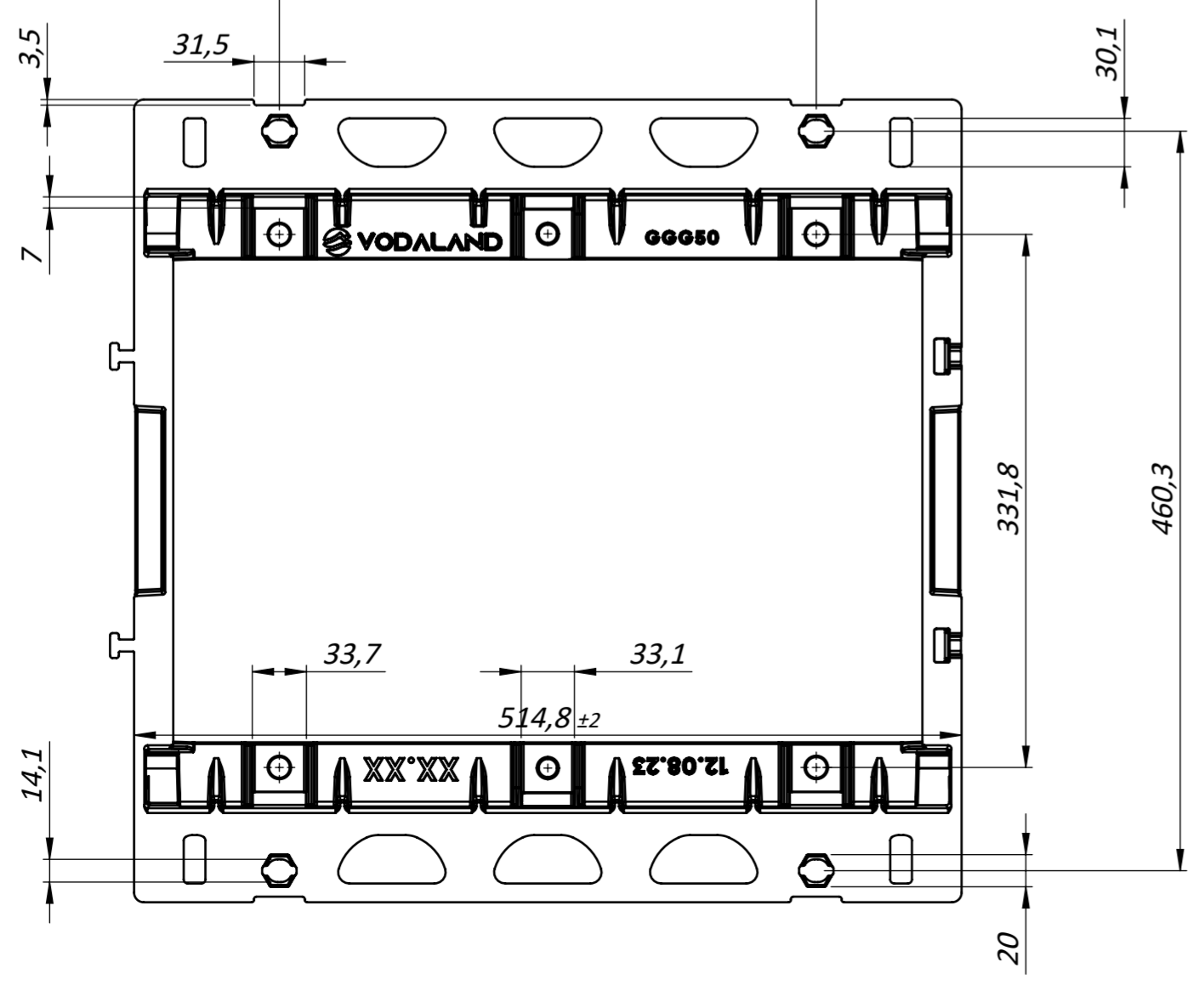
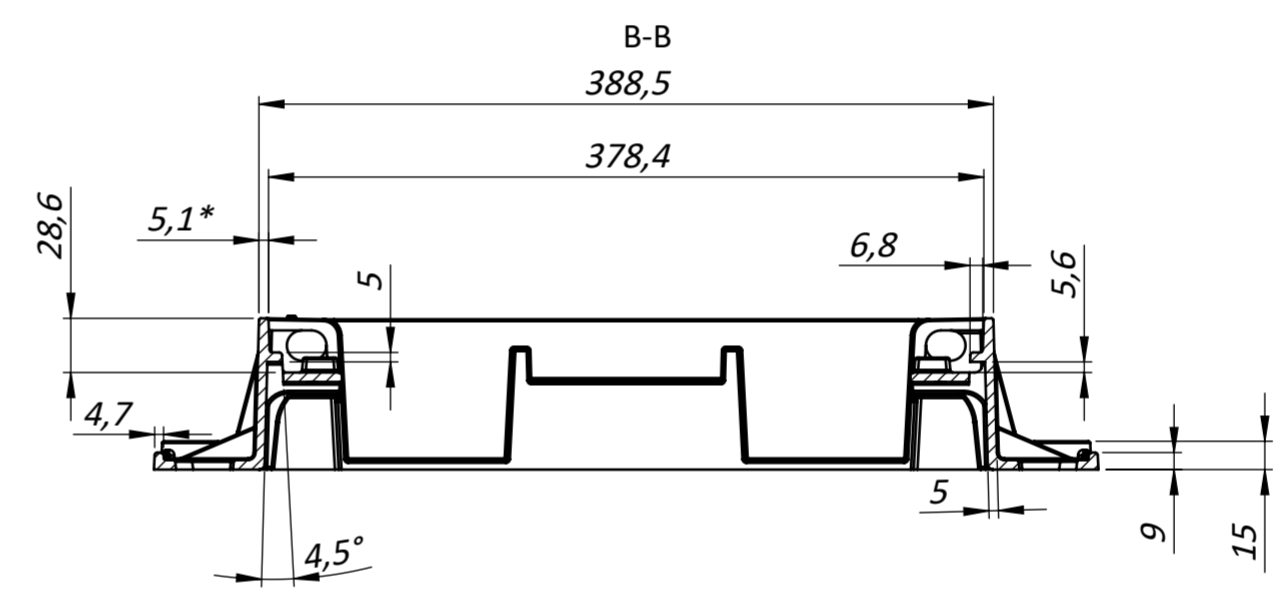
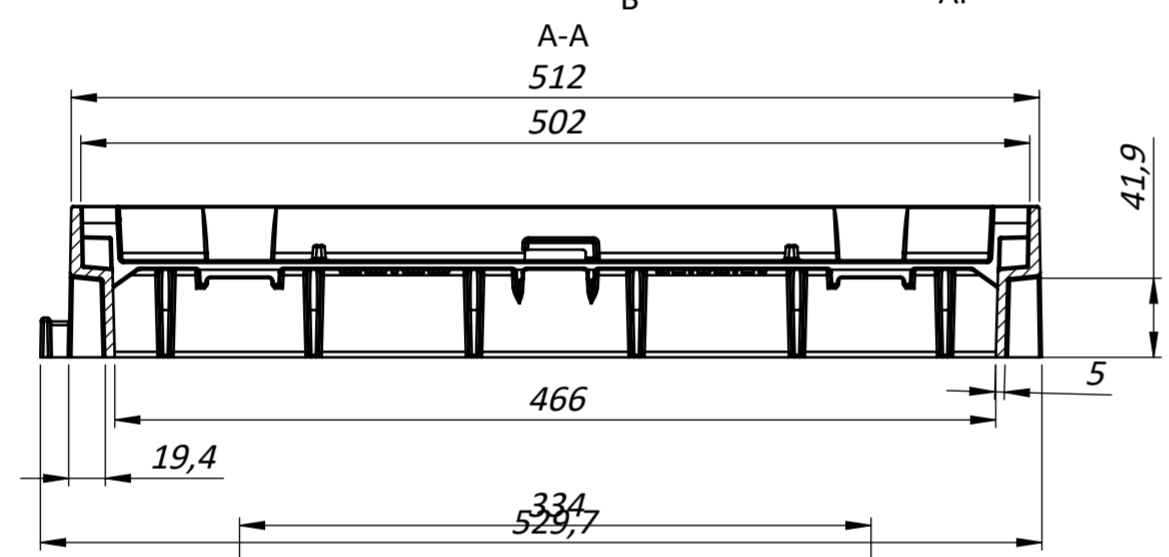
C
1:2

Pic.	Name	Article	QTY
1	Cast iron modular catch basin 500x522 D400	32355-52 f	1
2	Cast iron grate DN300 slotted D400 of modular catch basin	37304	1

UNLESS OTHERWISE SPECIFIED: DIMENSIONS ARE IN MILLIMETERS		FINISH:		DEBURR AND BREAK SHARP EDGES		DO NOT SCALE DRAWING		REVISION	
TOLERANCES: LINEAR: ANGULAR:									
DRAWN	NAME	SIGNATURE	DATE			TITLE:			
CHKD	Badovsky Ya	<i>[Signature]</i>	12.08.2023			Cast iron modular catch basin 500x522 D400			
APPVD	Tsyurak	<i>[Signature]</i>				Load class D400			
MFG	Kuntso					ARTICLE:			
Q.A.	Negru			MATERIAL:		32355-52		A2	
				WEIGHT: 26.3 kg		SCALE:1:4		SHEET 2 OF 7	

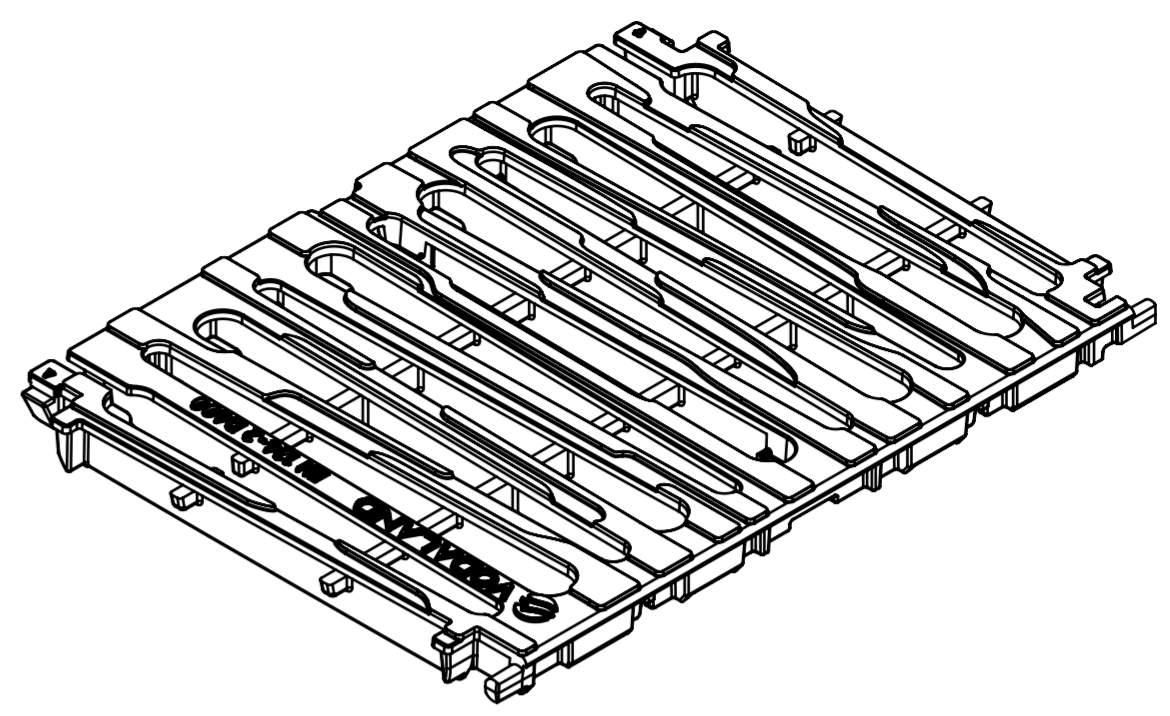
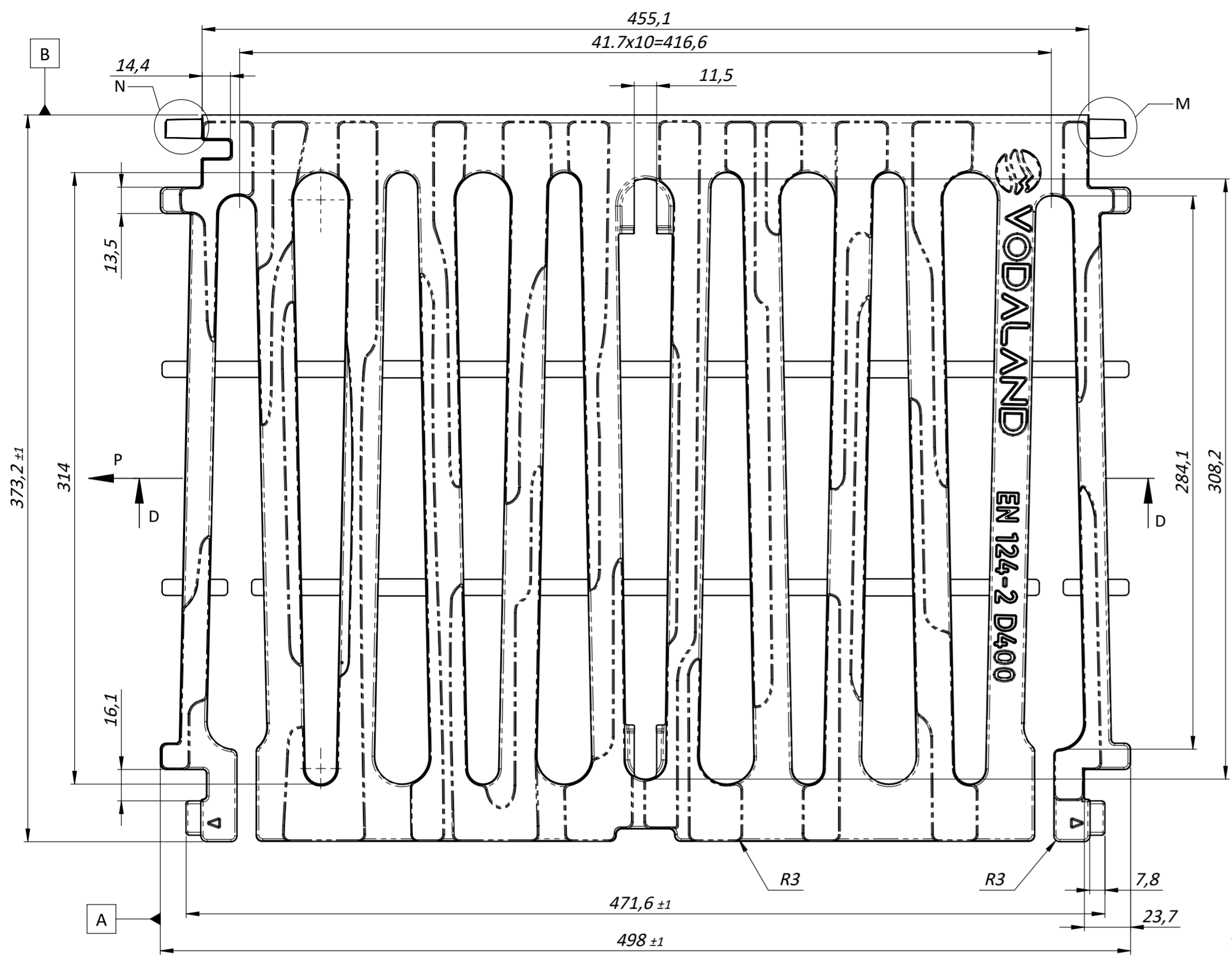


Convexity 1.5 mm ±0.5
Concavity 0.5 mm ±0.5

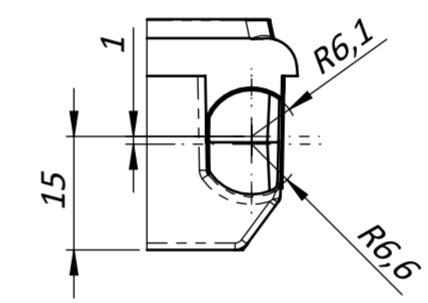


1. Surface coating: bitumen mix black matt paint with anticorrosion features
2. Tolerance-EN 8062/weight +/-3%
3. Mark the article number - EN 124 D400
4. Mark the date of manufacture of the hatches in the format MMY (month, year).
5. The font of the main inscriptions Arial is bold 10mm.

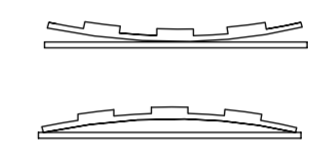
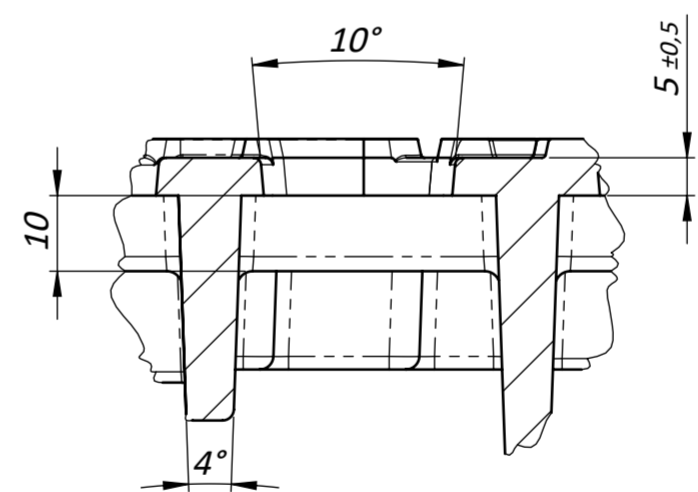
UNLESS OTHERWISE SPECIFIED: DIMENSIONS ARE IN MILLIMETERS			FINISH:		DEBURR AND BREAK SHARP EDGES		DO NOT SCALE DRAWING		REVISION	
TOLERANCES: LINEAR: ANGULAR:									TITLE:	
DRAWN: Badovsky Ya			SIGNATURE: <i>[Signature]</i>		DATE: 12.08.2023		Cast iron modular catch basin 500x522 D400		Load class D400	
CHKD: Vasylyk			APPVD: Tsyurak		MFG: Kuntso		MATERIAL: GGG50 DIN 1693		ARTICLE: 32355-52 f	
Q.A. Negru			WEIGHT: 10,38 kg		SCALE: 1:4		SHEET 3 OF 7		A2	



VIEW P
90°
SCALE 1 : 1



LOCAL F
SCALE 1 : 1

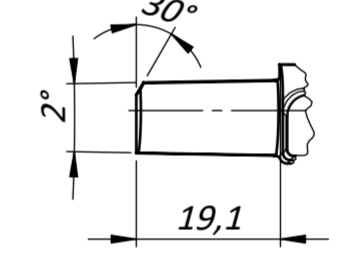


Выпуклость 1,5 мм ±0,5

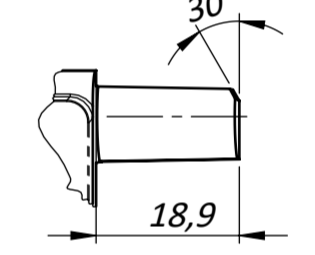


Вогнутость 0,5 мм ±0,5

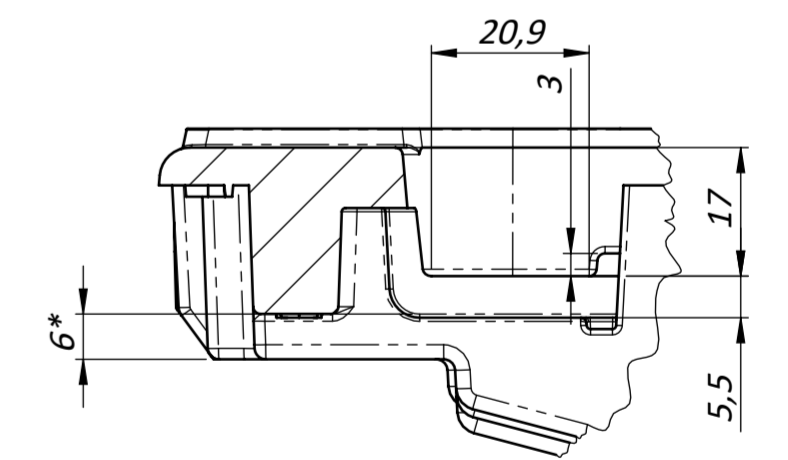
LOCAL N
SCALE 1 : 1



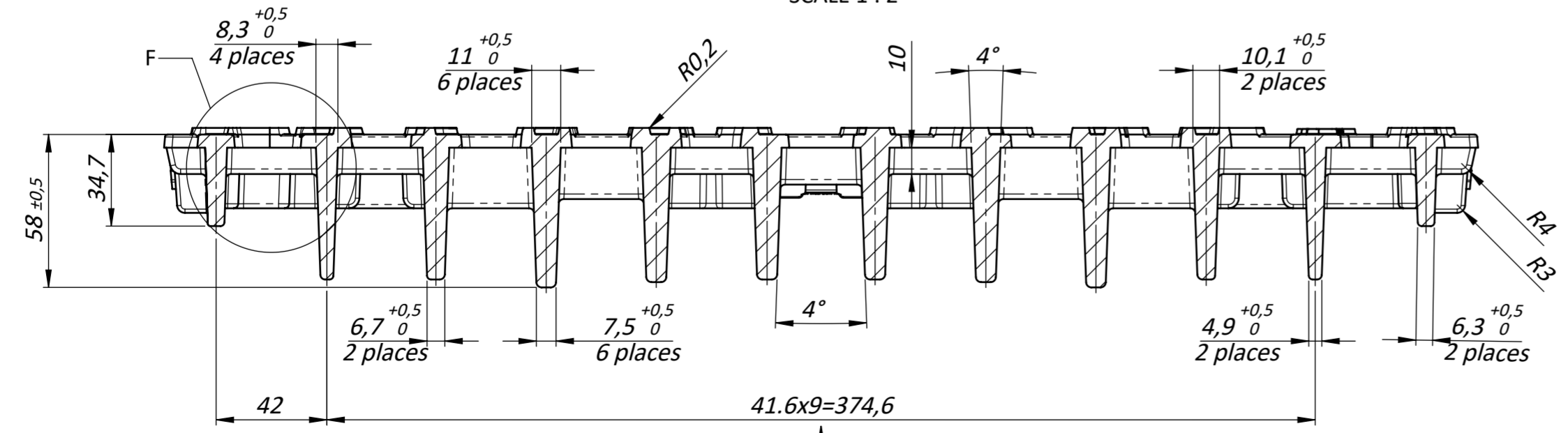
LOCAL M
SCALE 1 : 1



LOCAL E
SCALE 1 : 1

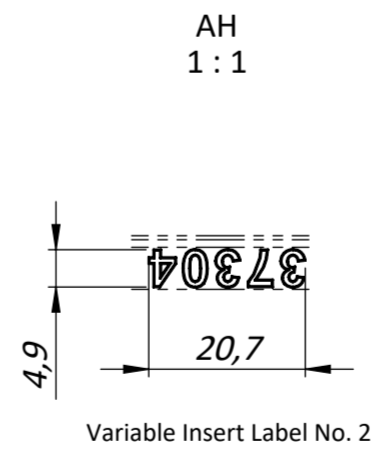
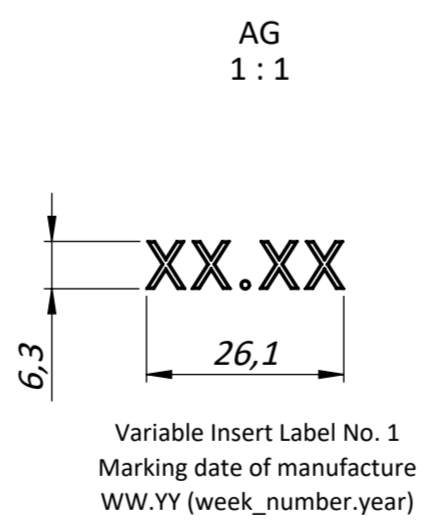
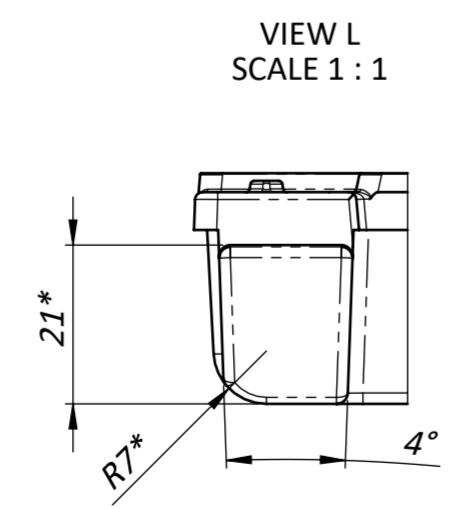
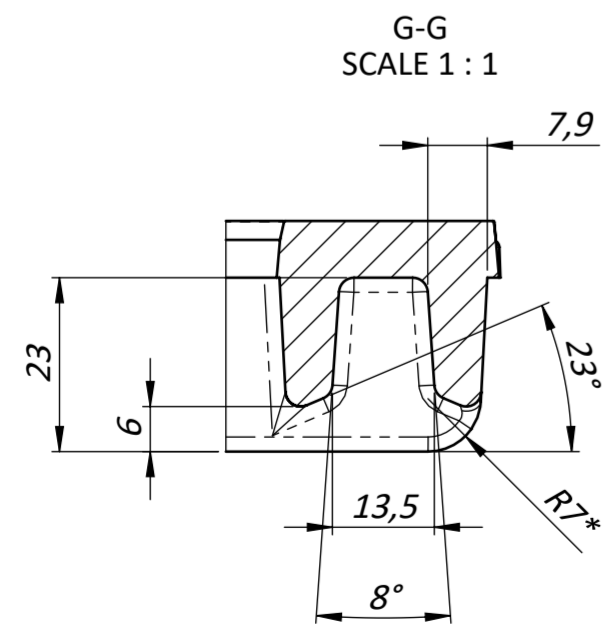
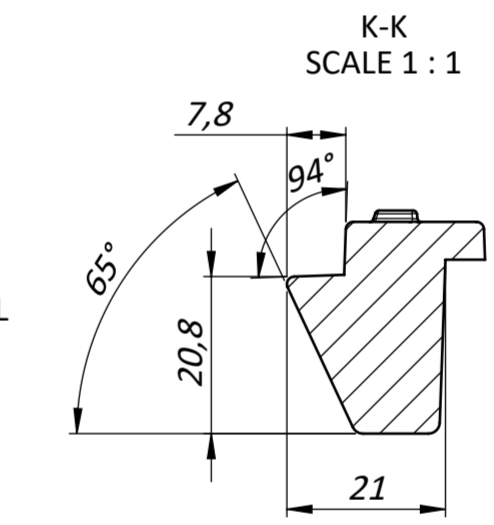
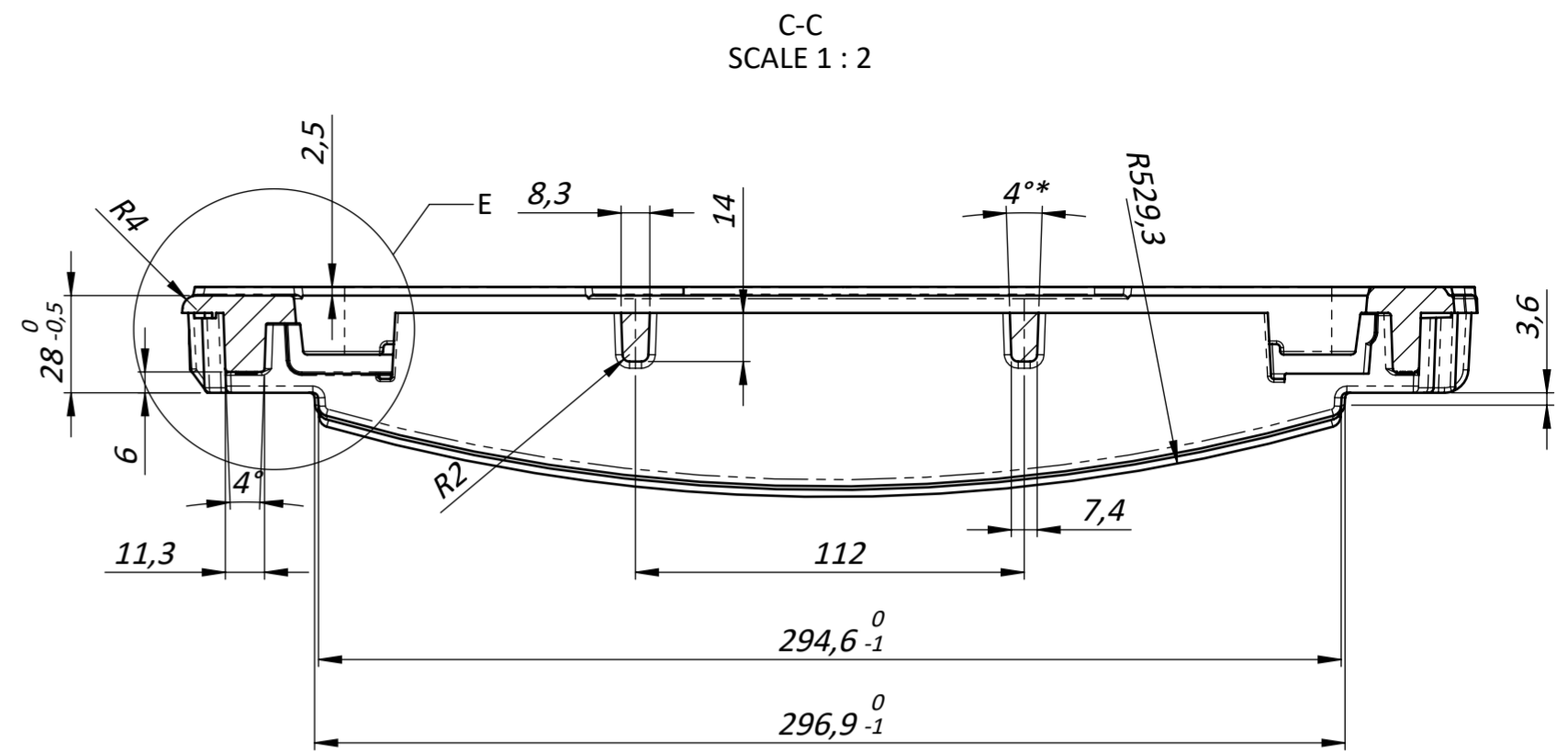
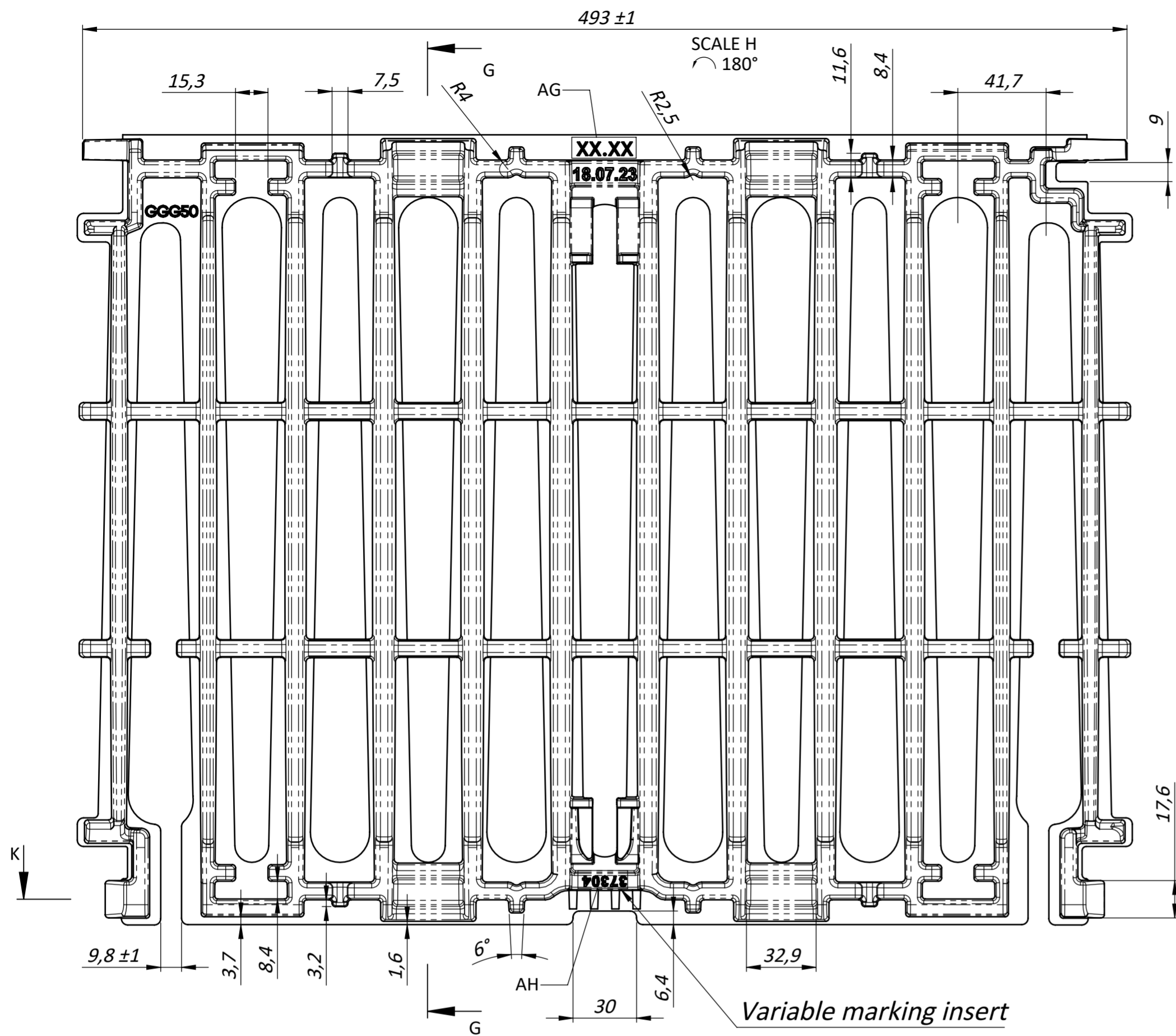


D-D
SCALE 1 : 2



1. Surface coating: bitumen mix black matt paint with anticorrosion features
2. Tolerance-EN 8062/weight +/-3%
3. Mark the article number - EN 124 D400
4. Mark the date of manufacture of the hatches in the format MMY (month, year).
5. The font of the main inscriptions Arial is bold 10mm.

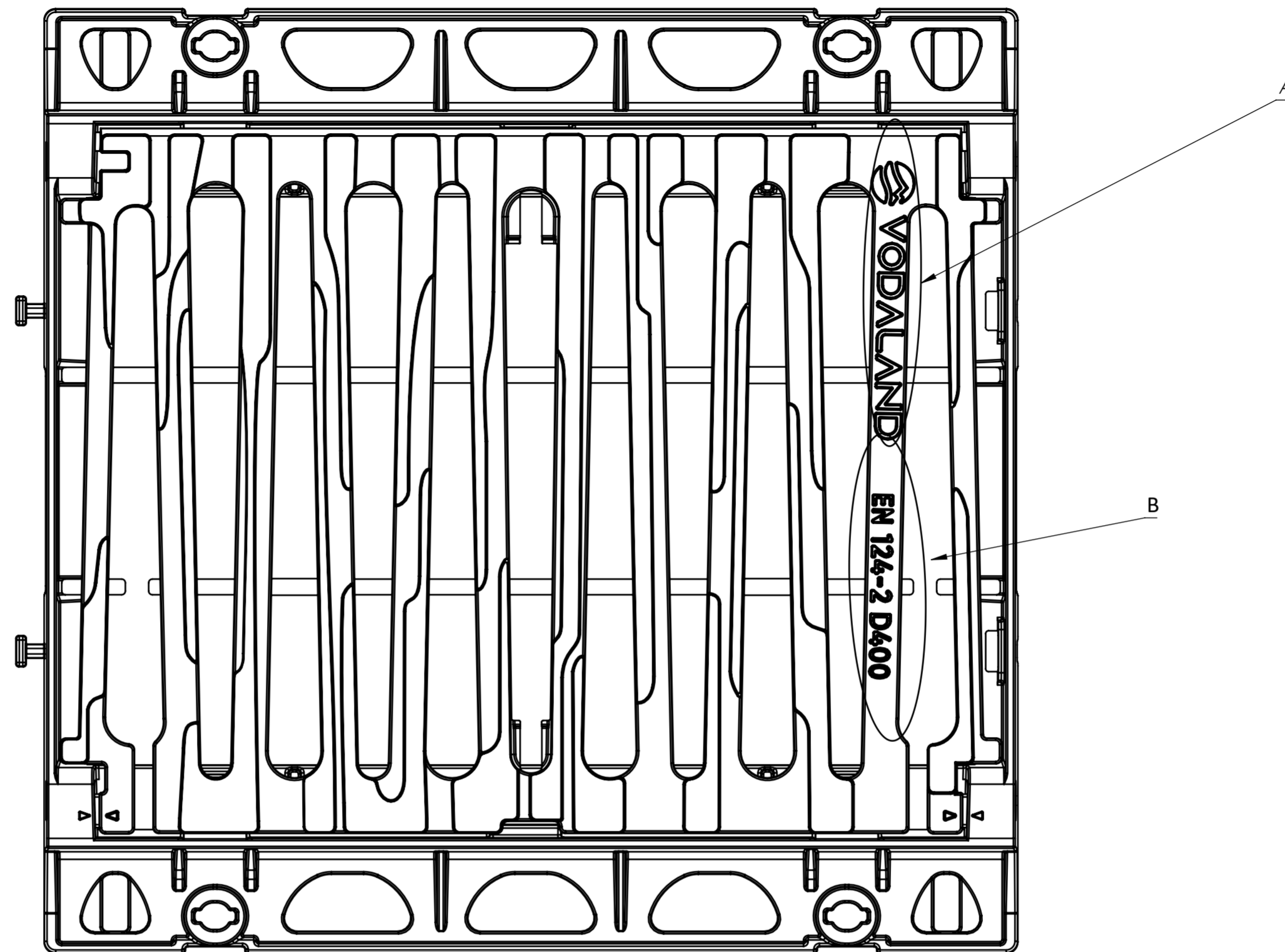
UNLESS OTHERWISE SPECIFIED: DIMENSIONS ARE IN MILLIMETERS			FINISH:		DEBURR AND BREAK SHARP EDGES		DO NOT SCALE DRAWING		REVISION	
TOLERANCES: LINEAR: ANGULAR:									TITLE:	
							Cast iron grate DN300 slotted D400 of modular catch basin			
							Load class D400			
DRAWN: Badovsky Ya			SIGNATURE: [Signature]		DATE: 18.07.2023		ARTICLE:		A2	
CHKD: Vasylyk							GGG50 DIN 1693		37304	
APPVD: Tsyurak							WEIGHT: 15.89 kg		SCALE: 1:4	
MFG:							SHEET 4 OF 7			
Q.A. Negru										



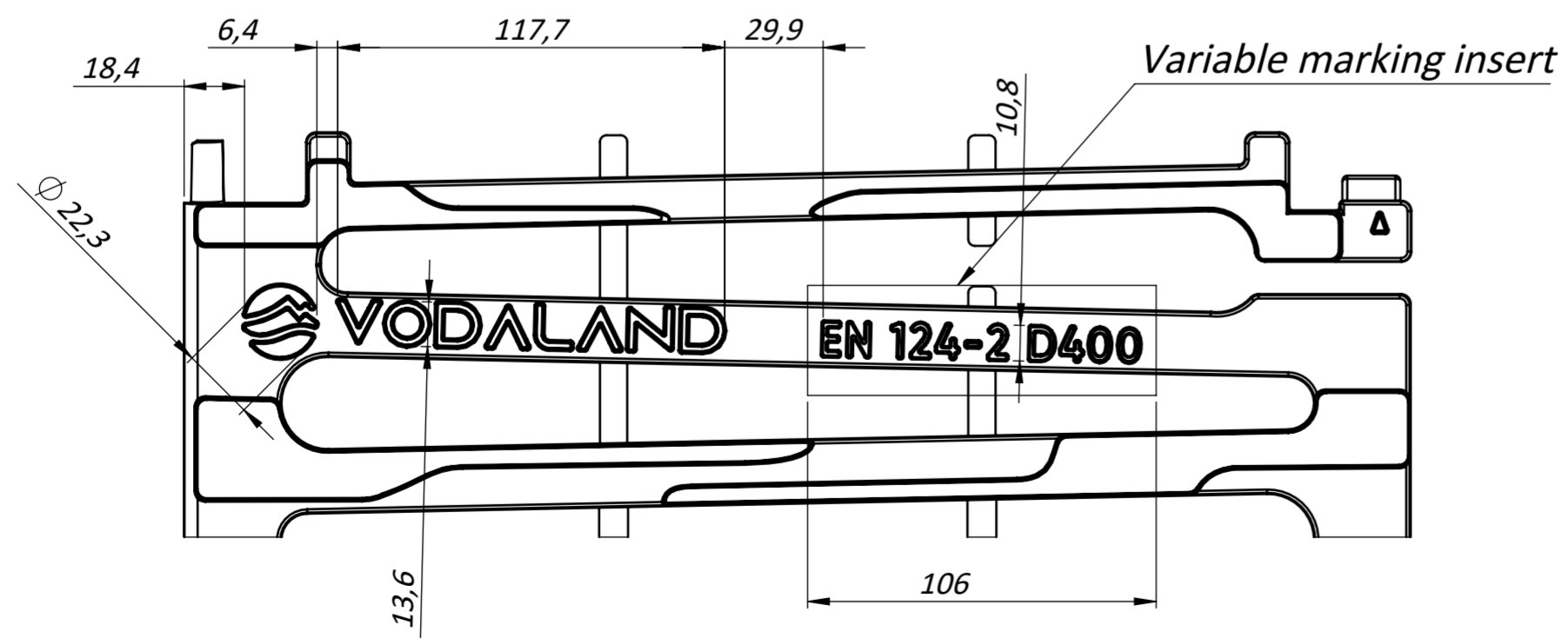
1. Surface coating: bitumen mix black matt paint with anticorrosion features
2. Tolerance-EN 8062/weight +/-3%
3. Mark the article number - EN 124 D400
4. Mark the date of manufacture of the hatches in the format MMY (month, year).
5. The font of the main inscriptions Arial is bold 10mm.

UNLESS OTHERWISE SPECIFIED: DIMENSIONS ARE IN MILLIMETERS			FINISH:		DEBURR AND BREAK SHARP EDGES		DO NOT SCALE DRAWING		REVISION	
TOLERANCES: LINEAR: ANGULAR:									TITLE:	
DRAWN: Badovsky Ya			SIGNATURE: [Signature]		DATE: 18.07.2023		Cast iron grate DN300 slotted D400 of modular catch basin		ARTICLE:	
CHKD: Vasylyk			APPVD: Tsyurak		MFG: [Signature]		Load class D400		A2	
Q.A: Negru			MATERIAL: GGG50 DIN 1693		WEIGHT: 15.89 kg		ARTICLE: 37304		SCALE: 1:4	
							SHEET 5 OF 7			

PLACEMENTS AND SIZES OF EXTERNAL INSTALLATIONS



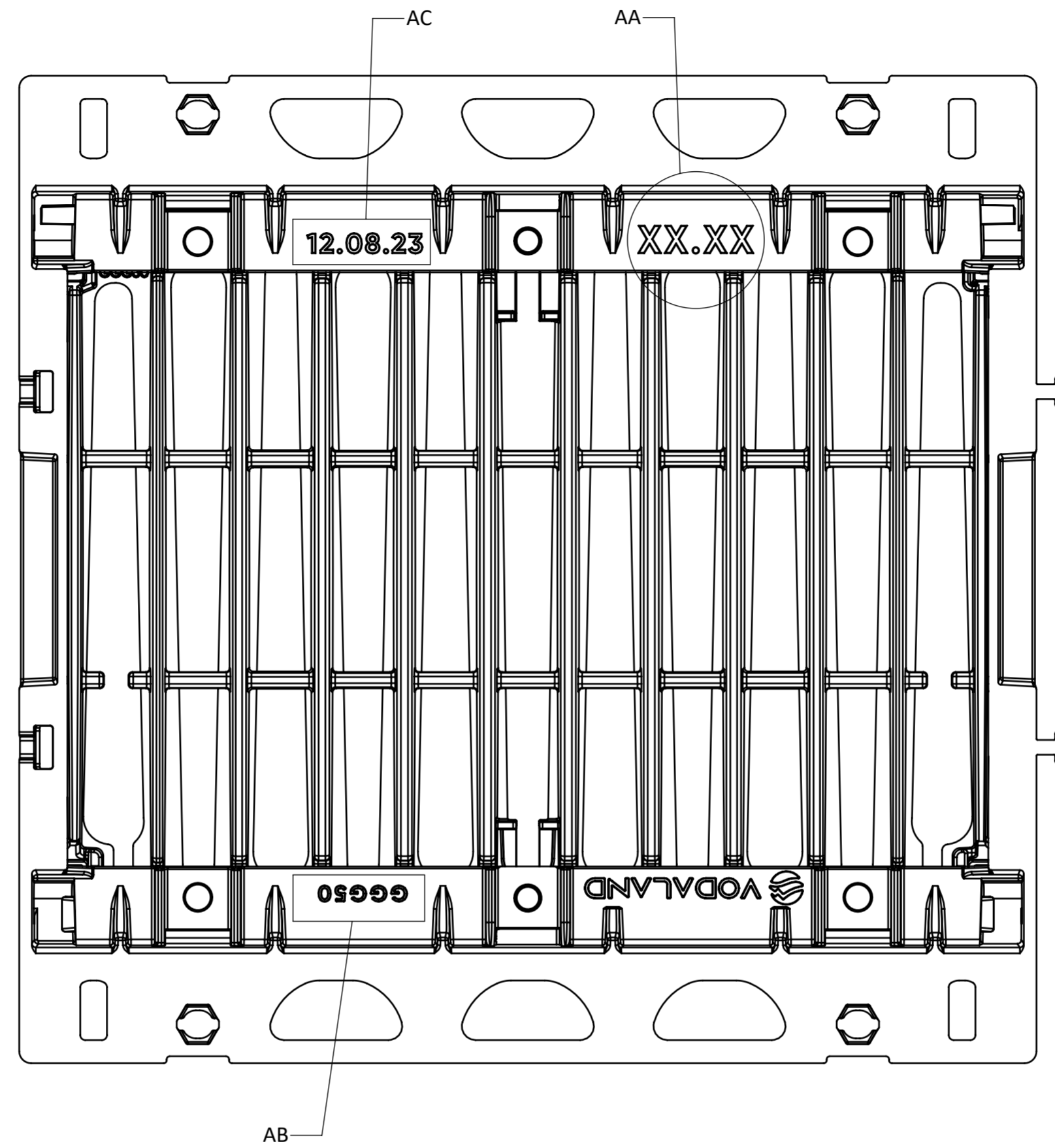
List of insertion variables:
1. The logo and the brand name of the company and indication "EN124"



Variable marking insert EN124

UNLESS OTHERWISE SPECIFIED: DIMENSIONS ARE IN MILLIMETERS			FINISH:		DEBURR AND BREAK SHARP EDGES		DO NOT SCALE DRAWING		REVISION		
TOLERANCES: LINEAR: ANGULAR:									TITLE:		
									Cast iron modular catch basin 500x522 D400		
DRAWN: Badovsky Ya		SIGNATURE: [Signature]		DATE: 12.08.2023				ARTICLE:		A2	
CHKD: Vasylyk		SIGNATURE: [Signature]						Load class D400			
APPVD: Tsyurak		SIGNATURE: [Signature]						32355-52			
MFG: Kuntso		SIGNATURE: [Signature]									
Q.A: Negru		SIGNATURE: [Signature]				MATERIAL:					
						WEIGHT: 26.3 kg		SCALE: 1:2.5		SHEET 6 OF 7	

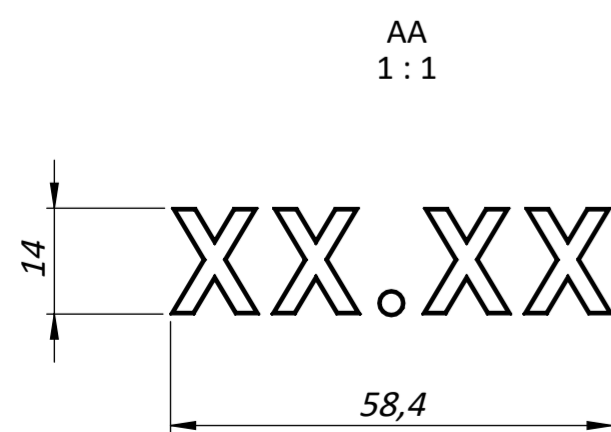
INSCRIPTIONS ON THE BODY



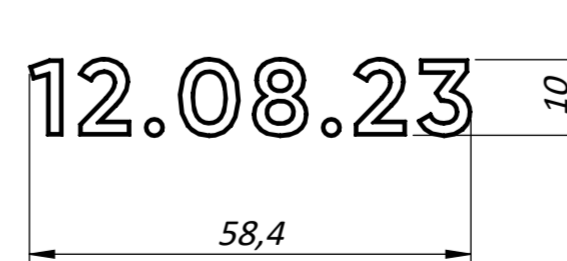
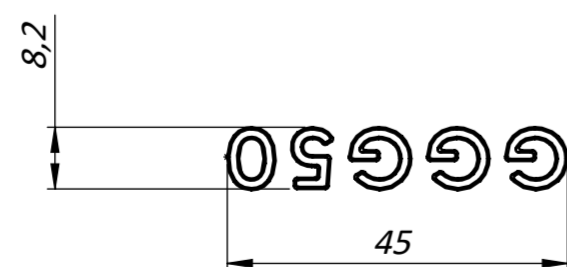
INSCRIPTIONS ON THE GRILLE

AB
1:1

AC
1:1



Variable Insert Label No. 3
Marking date of manufacture
WW.YY (week_number.year)



UNLESS OTHERWISE SPECIFIED: DIMENSIONS ARE IN MILLIMETERS				FINISH:		DEBURR AND BREAK SHARP EDGES		DO NOT SCALE DRAWING		REVISION
TOLERANCES: LINEAR: ANGULAR:										TITLE:
DRAWN: Badovsky Ya				SIGNATURE: <i>[Signature]</i>		DATE: 12.08.2023				Cast iron modular catch basin 500x522 D400 Load class D400
CHKD: Vasylyk				SIGNATURE: <i>[Signature]</i>				ARTICLE:		A2
APPVD: Tsyurak				SIGNATURE: <i>[Signature]</i>				32355-52		
MFG: Kur'iso				SIGNATURE: <i>[Signature]</i>				SCALE: 1:2.5		SHEET 7 OF 7
Q.A: Negru				SIGNATURE: <i>[Signature]</i>		MATERIAL:		WEIGHT: 26.3 kg		